

GISD
PARENT INFORMATION NIGHT



Date: September 22, 2021

Time: 5:30 pm – 6:30 pm

Welcome to the 2021-2022 School Year

GISD Special Education Vision Statement

Special Education within Gainesville Independent School District will be known for its excellence in ensuring that students are prepared to be successful in their current and future endeavors. The program will be characterized by:

- A positive, supportive, and professional culture;
- Collaboration among GISD staff, parents, students, and community; and
- A full continuum of exemplary programs and services.

WHO IS ELIGIBLE FOR SPECIAL EDUCATION SERVICES?

Special Education services are provided to eligible students who meet criteria under IDEA for one or more of the following areas of eligibility:

Auditory Impairment (AI)

Autism (AU)

Deaf-Blindness (DB)

Emotional Disturbance (ED)

Intellectual Disability (ID)

Multiple Disabilities

Non-Categorical Early Childhood (NCEC)

Orthopedic Impairment (OI)

Other Health Impairment (OHI)

Specific Learning Disability (LD)

Speech or Language Impairment (SI/LI)

Traumatic Brain Injury (TBI)

Visual Impairment (VI)

Special Education Services and Programs Provided in GISD

ASSESSMENT SERVICES

Assessment on each campus is conducted by qualified Educational Diagnosticians, Licensed Specialists in School Psychology, Speech and Language Pathologists, and other related services specialists. Any students suspected of having a disability that would qualify them for special education services should be referred for an assessment. This group of professionals is responsible for re-evaluation at least once every three years to determine continued eligibility for services as well as initial evaluation services.

ITINERANT SERVICES

Itinerant services are provided for students who need assistance in special areas that are serviced by the special education department; these services include such services as speech, vision and auditory impaired just to list a few.

Special Education Services and Programs Provided in GISD

PRE-SCHOOL PROGRAM FOR CHILDREN WITH DISABILITIES (ECSE)

Gainesville ISD offers a communication-based, early intervention program to provide for the educational success of certain identified children diagnosed with various disabilities. An ARD committee will determine if ECSE is appropriate for 3-5 year olds.

INFANT PROGRAM (ECI)

For students 0 to 3 years old who have been identified as visually impaired, auditory impaired, or deaf-blind.

Special Education Services and Programs Provided in GISD

INCLUSION

Inclusion is an instructional arrangement where students with disabilities are included in the general education classes to the maximum extent possible. Special Education staff members that provide inclusion support monitor students in general education classes and often team teach with a general education teacher providing services in the general education classroom.

CONTENT MASTERY(CMC)

Special Education students attend CMC for accommodations of the regular curriculum, methods, and/or materials as defined by the ARD/IEP. CMC is proactive in nature through the coordinated effort and expertise of the general and special educators on various campuses within Killeen ISD.

RESOURCE CLASS

Classes designed to provide instructional assistance to students who need more intensive academic services than can be provided in the general education class. Placement in resource class usually requires the student to be several grade levels behind and require content modifications.

Special Education Services and Programs Provided in GISD

FUNCTIONAL SKILLS

Self-Contained classes for students ages 5 to 21 who have severe or profound physical and/or cognitive disabilities. These students are often medically fragile and usually do not have oral speech as a communication system. These students are generally at a developmental age of 2 years or less, and their IEP goals focus on basic physical and emotional needs.

Special Education Services and Programs Provided in GISD

ASSISTIVE/ADAPTIVE TECHNOLOGY

Assistive/Adaptive Technology devices are provided to students whose ARD Committee and assistive technology team have determined that such a device would improve the outcomes for the student whose special needs require the use of such assistive technology.

OCCUPATIONAL/PHYSICAL THERAPY

The Occupational Therapy/Physical Therapy team uses purposeful, goal directed activities to enable a student with a disability to benefit from special education services. Specifically, therapy is designed to assist in the development of skills that are prerequisites to academic learning within the educational setting. Eligibility for this support service is determined by formal assessment, requested by the ARD Committee.

SPEECH/LANGUAGE THERAPY

Certified Speech and Language Pathologists/Assistants provide services to students who have been identified through the evaluation process as having a disability in speech and/or language. Services are provided in both general and special education settings.

OTHER RELATED SERVICES

Related services such as counseling, in-home and community based training, parent training, orientation and mobility, occupational therapy and physical therapy are provided as needed to assist the student with a disability to benefit educationally as specified in the ARD

Special Education Services and Programs Provided in GISD

VOCATIONAL ADJUSTMENT CLASSES

The Vocational Adjustment Class (VAC) is a special education vocational program that is offered on the high school campuses. This instructional arrangement is designed for students with disabilities who desire vocational training and are unable to make progress in regular vocational programs. The curriculum of the VAC program includes on-the-job training and frequent supervision at work sites in the community. Employment opportunities and training are based on vocational evaluation, student needs, and abilities, teacher recommendations, and parent preference. Admission to the Vocational Adjustment Program is made by the Admission, Review and Dismissal (ARD) committee.

TRANSITION PLANNING

Planning process implemented to assist students and their parents in developing an Individual Transition Plan (ITP) which addresses their expectations for life after high school. The ITP can guide the student and school toward academic courses that tie into post-secondary educational goals and/or assist them in identifying community resources needed.

Transition Specialist- Jennifer Sliger

Welcome to the GISD Home Page



The screenshot shows the Gainesville ISD Home Page. At the top, there is a red navigation bar with links for HOME, ABOUT GISD, BOARD, DEPARTMENTS, HUMAN RESOURCES, FACULTY/STAFF, PARENTS, EMPLOYMENT, COMMUNITY, and BOND 2021. Below this is the Gainesville ISD logo and the tagline "Every Leopard, Every Day". To the right of the logo are links for "Translate Language | User Options", "District Home", and "Campuses".

Below the navigation bar is a dark grey bar with icons and labels for "Calendar", "Parent Portal", "Athletics", "Child Nutrition", "Human Resources", and "Fine Arts".

The main content area features a large banner for the "SPOTlight" magazine. The banner includes the text "Gainesville ISD SPOTlight Summer 2021" and "SUMMER 2021" with a large "G" logo. Below this, it says "SPOTLIGHT MAGAZINE" and "Now available!". A smaller text at the bottom of the banner reads "Pick up a copy at any GISD" and "Celebrating our students and staff!". A link "Click to view the digital version" is also present.

On the left side of the main content area, there is a red sidebar with the heading "QUICK LINKS" and a list of links: "Accountability", "Financial Transparency", "COVID Dashboard", "COVID testing", "COVID Quick Reference Guide", "Buy Game Tickets", "Ride 360 Bus Tracker", "Bus Transportation", and "Transfer Application".

The bottom of the screenshot shows a Windows taskbar with various application icons and a system tray displaying the time "9:15 AM" and date "9/16/2021".

Important Places to go While on GISD's Website

- Students and Parents: resources for parents and students in a variety of user-friendly links for home use
- Schools: access to your campus's website including staff directories and events specific to the campus
- Departments: comprehensive list of all departments in GISD
 - Parent Educator Corner
 - Special Education
 - Special Olympics

The Parent Portal Access Center is a great way to monitor your student's academic progress throughout the nine weeks. Grades are posted regularly on this secure website providing you with up to date information on your child's learning in the classroom.

Please note: IEP goals are not provided on the Parent Portal Access Center. You can contact the campus or Special Services department for an update on goals.



gainesvilleisd.org/Page/1

HOME ABOUT GISD BOARD DEPARTMENTS HUMAN RESOURCES FACULTY/STAFF PARENTS EMPLOYMENT COMMUNITY BOND 2021

G GAINESVILLE ISD
Every Leopard, Every Day

Translate Language | User Options
District Home Campuses

Calendar Parent Portal Athletics Child Nutrition Human Resources Fine Arts

QUICK LINKS

- Accountability
- Financial Transparency
- COVID Dashboard
- COVID testing
- COVID Quick Reference Guide
- Buy Game Tickets
- Ride 360 Bus Tracker
- Bus Transportation
- Transfer Application

SPOTlight Summer 2021

SUMMER 2021 SPOTLIGHT MAGAZINE

gainesvilleisd.org/site/Default.aspx?PageType=1&SiteID=1&ChannelID=25&DirectoryType=6

HOME ABOUT GISD BOARD DEPARTMENTS HUMAN RESOURCES FACULTY/STAFF PARENTS EMPLOYMENT COMMUNITY BOND 2021

G GAINESVILLE ISD
Every Leopard, Every Day

Translate Language | User Options
District Home Campuses

Calendar Parent Portal Athletics Child Nutrition Human Resources Fine Arts

Home » Departments Directory »

Departments Directory

A B C F H M S T

A	F	S
<ul style="list-style-type: none">Athletics	<ul style="list-style-type: none">Fine Arts	<ul style="list-style-type: none">Special Services
B	H	T
<ul style="list-style-type: none">Business Office	<ul style="list-style-type: none">Health Services	<ul style="list-style-type: none">Technology
C	M	
<ul style="list-style-type: none">Child NutritionCommunicationsCurriculum & Instruction	<ul style="list-style-type: none">Human ResourcesMaintenance & Operations	<ul style="list-style-type: none">Transportation

W. Tinnie St E. Tinnie St juarez remodelin



GAINESVILLE ISD
Every Leopard, Every Day

[Translate Language](#) | [User Options](#)

[District Home](#) [Campuses](#)

- SPECIAL SERVICES
 - [Special Services Home](#)
 - [Staff Directory](#)
 - [Occupational Therapist Opening](#)
 - [Special Services Counselor](#)
 - [Child Find](#)
 - [Operating Procedures](#)
 - [Autism](#)
 - [Dyslexia](#)
 - [Section 504](#)
 - [Parent Resources and Information](#)

[Home](#) » [Departments](#) » [Special Services](#) » [Special Services Home](#)

Gainesville ISD Special Services
Special Education, Section 504, and Dyslexia

1201 Lindsay St. Gainesville, TX 76240
940-612-0730
940-668-0357 (fax)

The Gainesville ISD Special Education
and Special Services department provide specialized services,
training, and support to all schools within GISD.



Parent Training Presentations

We Provide Support and Information In a Variety of Ways

Personalized Appointments

Books

Online Resources and Tools

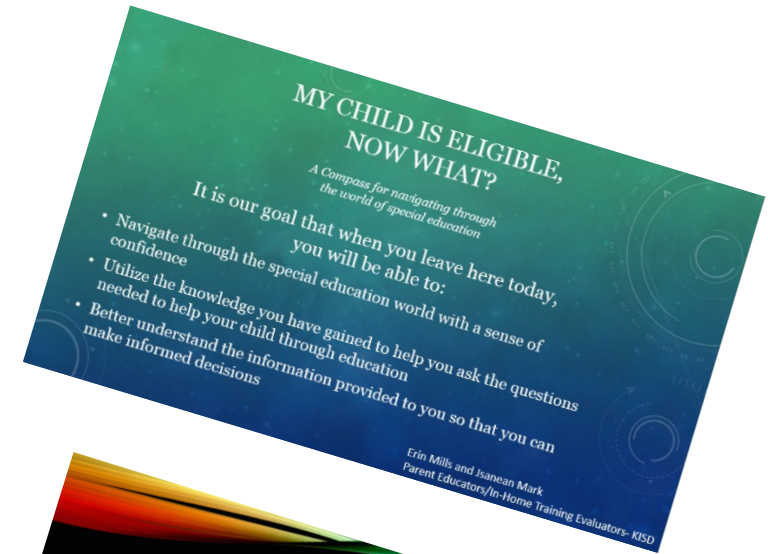
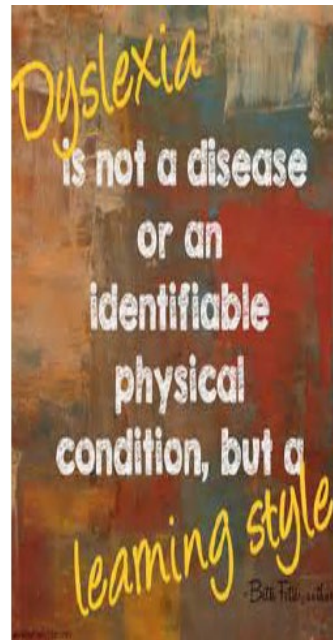
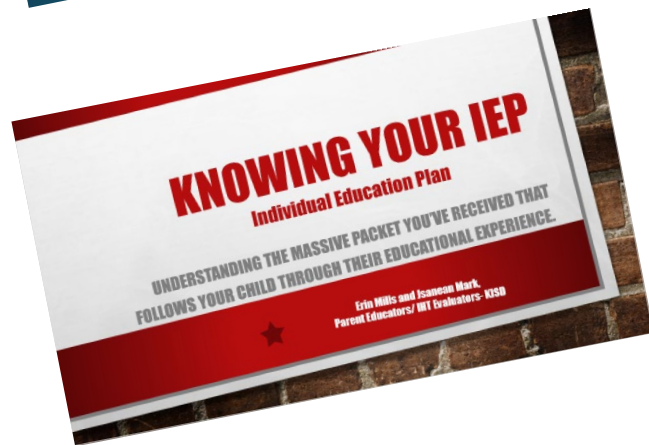
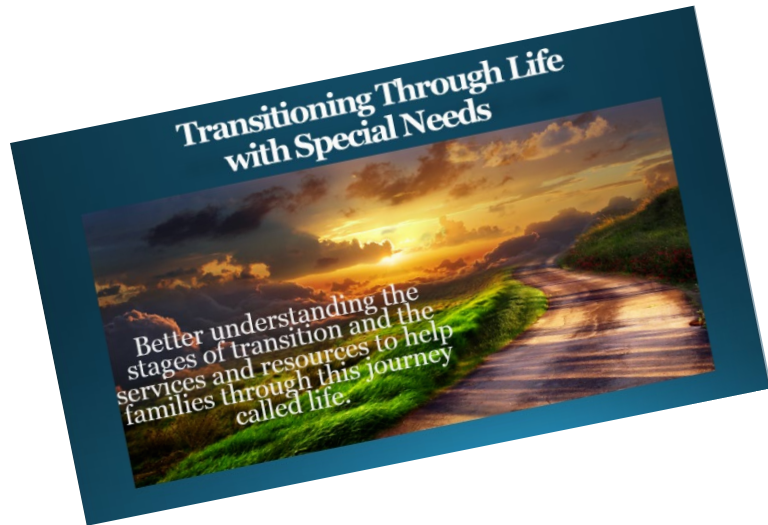
Workshops

Videos

Handouts

Pamphlets

Check out some of the topics we cover in our workshops!



Here's a
Sneak
Peak

Dyslexia Workshop

Presenters from Gainesville ISD will provide information on 'What Is Dyslexia?' and 'Living with Dyslexia'. Suggestions will be provided for parents working with their children at home.

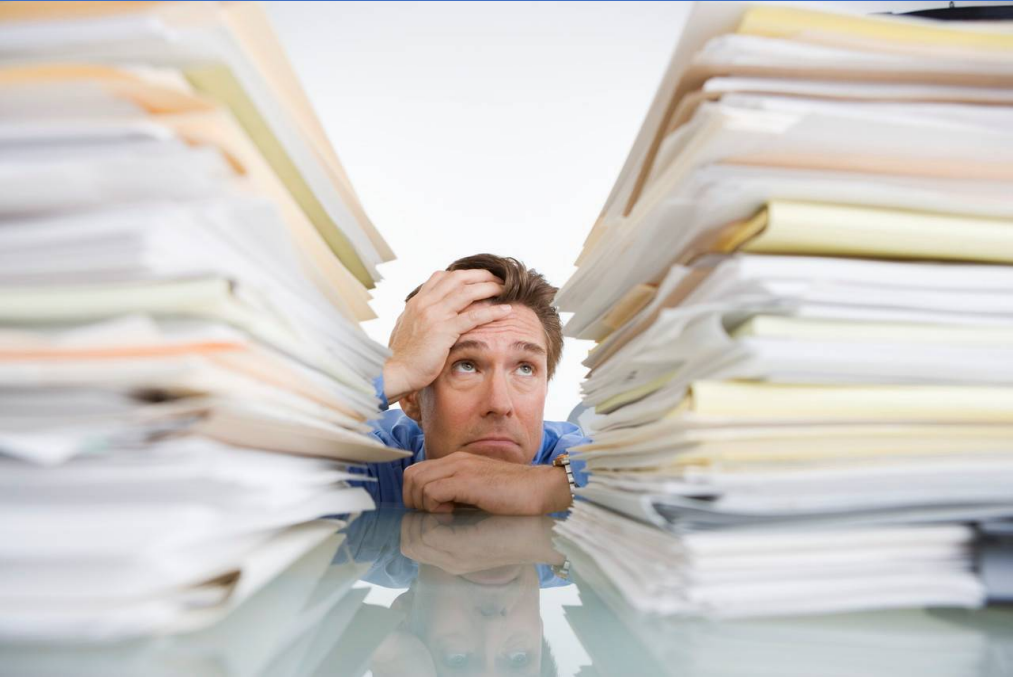
Transition Workshop

Presenters from Gainesville ISD will provide information on Transition services and planning for after High School

At Our
Fall
Schedule

What Do I Do?

When you start feeling this...



And before you get to this...



Our Special Education Executive Director and Director

Brittenie Polk–Director

Diagnosticians

Kathleen Schroeder

Julianna Jeffcoat

Konner Ward

Kristan Ratliff

Reanna Walker

Speech Pathologist

Tasha Klement

Anita Brown

Erica Glidewell

Dyslexia Therapist

Jamie Blumberg

Taryn Krantz

Occupational Therapist

Amber Graham

Cristian Dieter

Physical Therapist

Renee Petzel

Transition Counselor

Jennifer Sliger

Special Education Counselor

Kim Parsons